

# iLotusLand in Drinking Water Monitoring with Gia Dinh Water Supply Company



**TIME**  
2022



**LOCATION**  
Ho Chi Minh city - VietNam



**CLIENT**  
Gia Dinh Water Supply

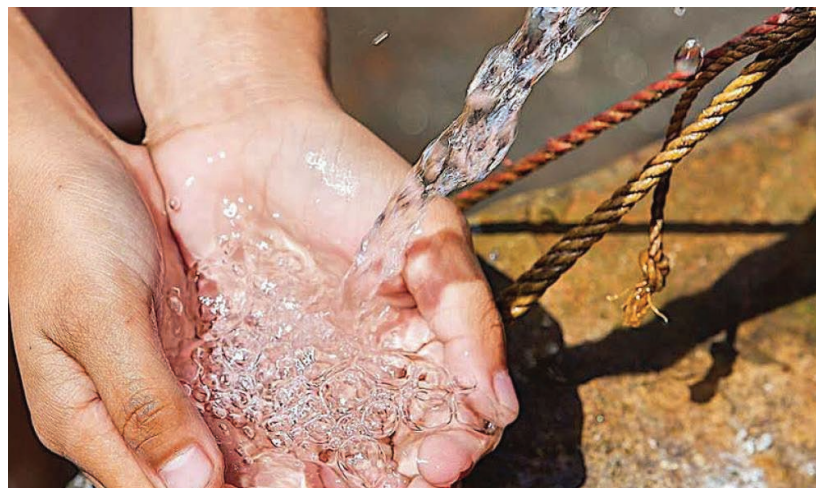
## ABOUT THE CLIENT

Gia Dinh Water Supply Co. is a prominent water utility company serving various districts within Ho Chi Minh City, Vietnam. Committed to delivering reliable and safe water services, the company plays a vital role in ensuring access to clean water for residential, commercial, and industrial purposes of the 2 million population. With a focus on efficiency and sustainability, Gia Dinh Water Supply Co. employs advanced technologies and rigorous quality control measures to meet the diverse needs of its customers while contributing to the overall well-being and development of the community.



## THE CHALLENGE

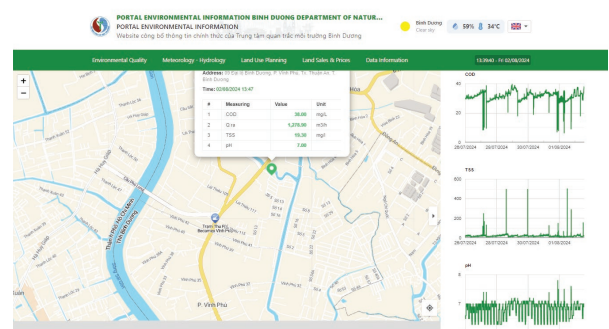
As Gia Dinh Water Supply Company is responsible for the quality of distribution water quality, so that the quality level of the water has to be as high as it is committed to the public. Hence, Gia Dinh Company needs the measuring device to be robust and reliable, and at the same time, the remote management over its quality is also on the must-have list since they would like to store their water distribution network data for safety and inspection purposes.



## THE SOLUTION

In response to the request of Gia Dinh Water Supply Company, we have offered them 1 unit of iMisff 2101 – The plug-and-play drinking water monitoring station, including all needed instruments, datalogger, and software inside. Ensuring the water quality is well-measured, data can be transmitted to the responsible department, as well as displayed, and monitored effectively in the iLotusLand platform.

<b>Application</b>	<b>Drinking Water</b>
<b>Number of stations</b>	<b>1</b>
<b>Measured parameters</b>	pH, Chlorine, Electrical Conductivity, Turbidity
<b>Instrument models</b>	<b>Swan Analytical:</b> <ul style="list-style-type: none"> <li>- Monitor AMI Solicon 4</li> <li>- Monitor AMI Turbiwell 7027</li> <li>- Monitor AMI Trides</li> </ul>
<b>Datalogger model</b>	Envidata 1801
<b>Software model</b>	iLotusLand Platform for Environment (On-Cloud)



## THE RESULT

“By the real-time monitoring function of iLotusLand platform, we now can faster detect any problems to always ensure the committed quality of our water ”

– Mr. Nghia Pham.

With the handover of iMisff 2101, especially the iLotusLand Monitoring Platform, now, the customer can do remote monitoring anywhere anytime to access the data of their distribution network, doing all kinds of reports automatically. Moreover, it also can serve the need for data storage for safety and inspection purposes. Making sure the water quality always meets the commitment, expectation, and certified standard.

“ iLotusLand is an environmental IoT company offering data-driven environmental monitoring solutions for better decision-making. With our plug-and-play stations, we monitor a wide range of parameters in Wastewater, Surface Water, Groundwater, Drinking Water, CEMS, AAQMS, etc. And iLotusLand data analytics platform delivers actionable insights for government, industries, and communities. Our commitment is to be a key player in fostering a sustainable future through intelligent environmental monitoring solutions and data science. ”