

iLotusLand With Coca-Cola Thu Duc Plant To Monitor 1 Wastewater Station



TIME
2013



LOCATION
Ho Chi Minh city - VietNam



CLIENT
Coca Cola Thu Duc

ABOUT THE CLIENT

The Coca-Cola plant in Thu Duc stands as the first and the pivotal production hub in Vietnam for Coca-Cola, contributing to the nation's economy and employment. With cutting-edge facilities and technology, it manufactures millions of beverage units annually, playing a crucial role in meeting consumer demand across the southern region. Committed to sustainability and community development, the plant reflects Coca-Cola's dedication to responsible corporate citizenship in Thu Duc and beyond.



THE CHALLENGE

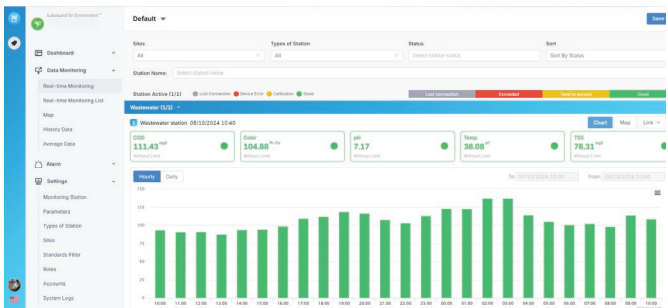
Coca-Cola Thu Duc Plant had to find a way to balance its growing demand in production which led to more wastewater discharge and environmental protection regulations from the authority. Hence, they had to ensure that the required measured parameters of COD, pH, TSS, and Amoni always aligned with the regulations. And their data needs to be sent in real-time to the authority for inspection as well as to be displayed on the provided software for internal management purposes.



THE SOLUTION

As requested by Coca-Cola Thu Duc, we have offered our iMisff 3101 – the plug-and-play wastewater monitoring station that includes instruments, datalogger, and software. Helping the plant to monitor the required parameters automatically with our robust sensors. Moreover the software become a helpful part of the day-to-day operation, helping the staff to always have their eyes on the field anytime.

Application	Wastewater Monitoring
Number of stations	1
Measured parameters	Nitrate, pH, COD, TSS, Amoni, Temp, Flow
Instrument models	Endress Hauser: <ul style="list-style-type: none"> - Viomax CAS51D - Turbimax CUS51D - Orbipac CPF81D - Posonic S FMU90 + FDU90
Datalogger model	Envidata 1801
Software model	iLotusLand Platform for Environment (On-Cloud)



THE RESULT

“We planned to have the software to do internal management, but it turned out as a great tool of ESG for us now” – Mr. Tai Nguyen – Manager

The installation of iMisff 3101 together with the dedicated monitoring platform of iLotusLand supported the Coca-Cola plant to fully comply with the local regulations. And it also creates greener production which slowly moves them forward with their sustainability goals. More importantly, the discharge data of which after-production now can be stored in iLotusland platform, being ready for any steps of inspection to meet the ESG certificate.

“ iLotusLand is an environmental IoT company offering data-driven environmental monitoring solutions for better decision-making. With our plug-and-play stations, we monitor a wide range of parameters in Wastewater, Surface Water, Groundwater, Drinking Water, CEMS, AAQMS, etc. And iLotusLand data analytics platform delivers actionable insights for government, industries, and communities. Our commitment is to be a key player in fostering a sustainable future through intelligent environmental monitoring solutions and data science. ”